

Spinning Wheels & Accessories

Canongate Crafts
1574 Canongate
Royal Mile

This leaflet illustrates and describes the products and accessories made by HALDANE & CO.(WOODTURNERS) LTD. It also illustrates imported kit-wheels.

They are available from HALDANE DEALERS through whom you are recommended to place your orders.

HALDANE & CO. stand by their products and they authorise their dealers to replace any items which are faulty through damage in transit or because of manufacturing inaccuracy.

Your dealers name should appear on this leaflet. In case of difficulty please write to :—

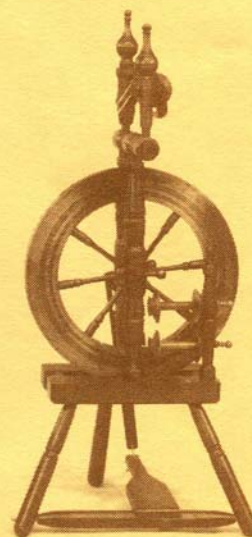
HALDANE & CO. (WOODTURNERS) LTD.,
GATESIDE,
by STRATHMIGLO,
FIFE,
SCOTLAND.

Telephone: Strathmiglo 469
Cables: HALDANE. STRATHMIGLO.

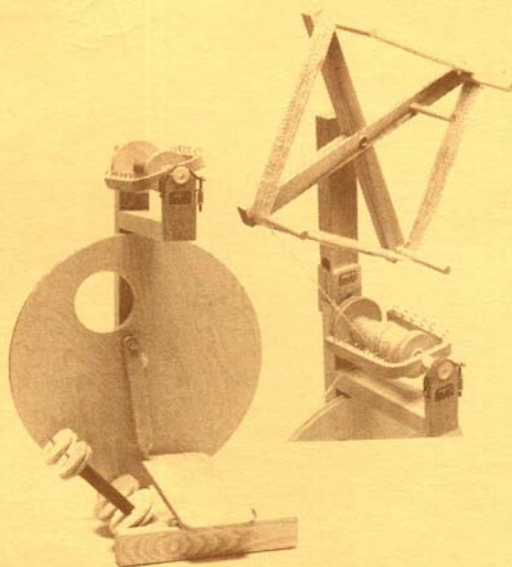
Shetland Spinning Wheel

This compact machine made entirely from prime kiln dried beech has a 16½" (417mm) wheel specially weighted for effortless spinning. The design is traditional while the ingenious tensioning arrangement on one of the maidens is also reproduced from an old design. It comes complete with built in bobbin holder, two bobbins, and a threading hook. A larger driving pulley is available on request. The Shetland Spinning Wheel is finished in a dark mahogany colour and waxed.

The wheel is fully built-up before despatch. The legs and crossbar assembly are then removed for packing while the wheel itself, the uprights and base remain as one. It can be re-built in minutes without the use of tools or glue.



Height	Width	Depth	Wheel Diameter	Height to Orifice	Orifice Diameter	Weight	Ratios (whorl to wheel)
35½" 902mm	18½" 472mm	16" 405mm	16½" 417mm	30½" 772mm	¾" 10mm	16½lbs. 7.5kg.	8.2 : 1, 9.2 : 1 (standard) 6 : 1, 7 : 1 (large)



Louët Kit-wheel

The Louet is a modern wheel designed for simple operation. It is bobbin-driven by a single PVC cord and has a flyer brake design which allows very sensitive control.

It has an ash frame supporting the wheel and pedal made in laminated birch, all finished with a clear sealer.

The counterbalanced wheel runs in two sets of ball bearings. The steel end of the flyer spindle runs in a nylon bush while the orifice end is supported in a brass bearing.

The three large bobbins, which each hold about 7 oz. (200 gms.) of wool, are reversible to permit two drive ratios. The patented 1/2" diameter nylon orifice is specially shaped and equally suitable for fine or heavy yarns and for plying.

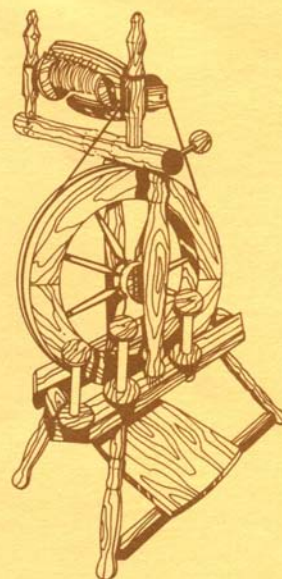
A wool winder is available which locates on top of the main uprights and will wind directly off the bobbin.

Height	Width	Depth	Wheel Diameter	Height to Orifice	Orifice Diameter	Weight
29" 737mm	19 5/8" 498mm	15 1/2" 394mm	19 5/8" 498mm	27 1/4" 692mm	1/2" 12mm	16 1/2 lbs. 7.5kg.

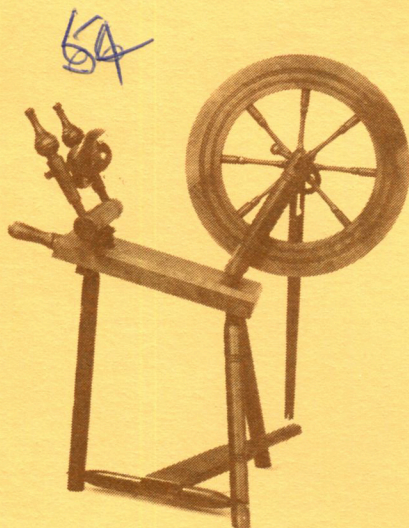
Ashford "Traveller" Kit-wheel

A robust and compact spinning wheel, incorporating all popular features of Ashford 'Traditional' model. Versatile and easy to use. Has separate belt and tension adjustments. Includes quick-change flyer and built-in bobbin holder. Woodturned in solid silver beech. Wheel, flyer, and 4 bobbins pre-assembled. Minimum of home construction.

The "Traveller" is designed by a team of spinners and craftsmen to meet today's special needs.



Height	Width	Wheel Diameter	Height to Orifice	Orifice diameter	Weight
35" 890mm	17" 430mm	16 1/4" 410mm	30" 760mm	3/8" 10mm	11 lbs. 5 kg.



Hebridean Spinning Wheel

The longest established of these Haldane traditional double drive band wheels, the Hebridean is accepted as a smooth running, well balanced piece of equipment, embodying all the features normally found on the original wheel.

Leather bearings, hand assembled wheel, wooden threaded tension screw and solid beech construction, are only some of the fine features on this craftsman made spinning wheel.

Before being packed for despatch the wheel is assembled and tagged for simple re-assembly which only takes minutes. No tools or glue being required. Finished in a dark oak colour and waxed it comes complete with two spare bobbins. An alternative larger driving pulley is available on request.

Height	Width	Depth	Wheel Diameter	Height to Orifice	Orifice Diameter	Weight	Ratios (whorl to wheel)
32" 815mm	28¾" 728mm	16½" 417mm	16½" 417mm	24" 610mm	¾" 10mm	18 lbs. 8.2 kg.	8.2 : 1, 9.2 : 1 (standard) 6 : 1, 7 : 1 (large)

Ashford "Traditional" Kit-wheel

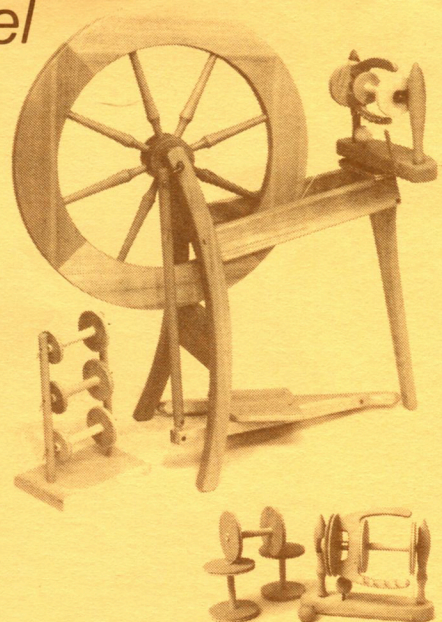
This wheel is designed for handspinners who want a functional wheel at a reasonable price.

The Ashford spinning wheel is easy to learn on and versatile in output. It has separate belt and tension-band drives. All parts are precision made in beautiful New Zealand silver beech. Solid rimmed wheel running on graphite impregnated nylon bearings, gives smooth treadling and maximum momentum. You can make a wide variety of individual woollen and worsted yarns as well as novelty plies on an Ashford wheel. Wheel, flyer and 4 bobbins come pre-assembled, leaving only minimum of home construction.

Extras include bobbin-holder and fully illustrated booklet on assembling and spinning. Stain and polish to suit any decor. Assembled spinning wheel 33 x 30 ins. Delivered in a pack-flat carton.

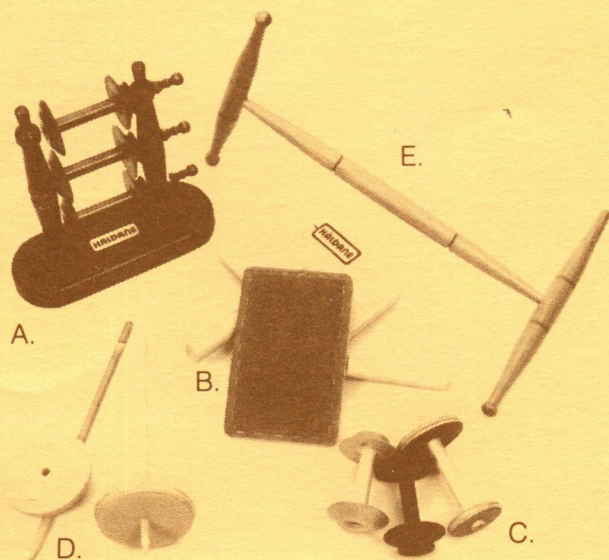
A jumbo flyer for thick yarns is available. This consists of a new horizontal bar and all parts on it.

The Ashford name is your guarantee of satisfaction.

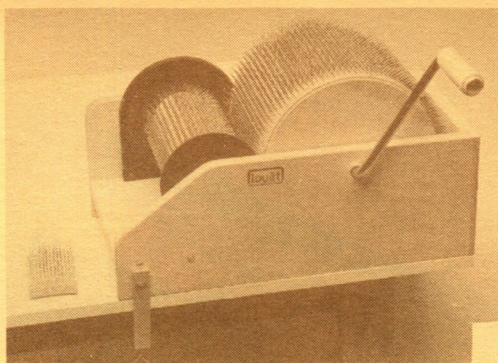


Height	Width	Depth	Wheel Diameter	Height to Orifice	Orifice Diameter	Weight
33" 840mm	33" 840mm	14" 356mm	21½" 542mm	27" 685mm	¾" 10mm	18 lbs. 8.2 kg.

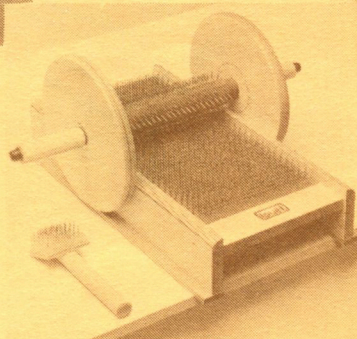
Accessories



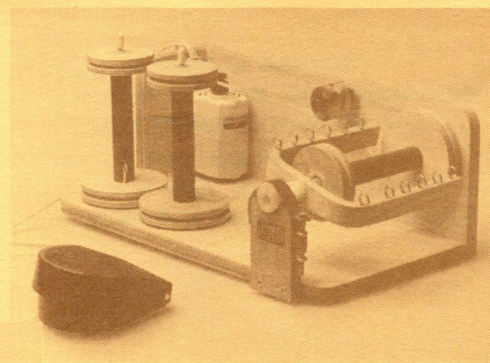
- A. Lazy Kates, includes 3 bobbins.
- B. Hand carders, rubber backed 7" x 5",
Unmounted rubber also available.
- C. Spare bobbins.
- D. Hand spindle.
- E. Niddy nodd.



Drum carder

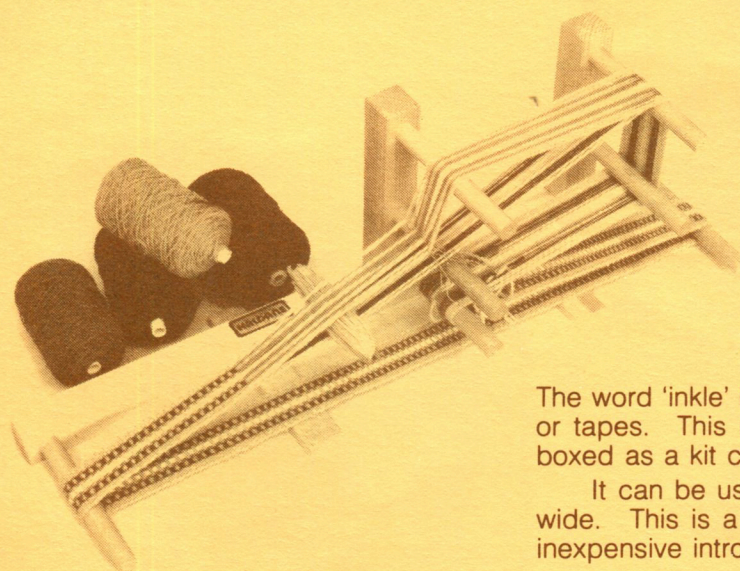


Roller carder



Electric Spinner

Inkle Loom



The word 'inkle' is of Scottish origin and refers to narrow bands or tapes. This neat loom which is only 30" (760mm) long is boxed as a kit complete with glue and screws.

It can be used for an exciting variety of weaving up to 5" wide. This is a simple and entirely portable loom offering an inexpensive introduction to the challenge of weaving.